

## What's new?

Features • Functions • Fixes

# SSL Mixer / Soundscape V6

## Software Update V6.1

SSL Mixer / Soundscape V 6.1 User Guide Addendum



# Table of Contents

1. Introduction .....	3
How to use this manual .....	3
2. Installing V6.1 Software .....	4
Important Preparations .....	4
Compatible SSL Audio Cards .....	5
System Requirements .....	5
System Recommendations .....	6
3. New Software Features in V6.1 .....	7
Multi-column Mixer editing .....	7
Keep Mixer column Selection .....	8
Save individual columns and Partial Mixers .....	9
Append Mixer File .....	9
Drag and Drop Mixer File into current Mixer .....	9
Improved MX4 DSP Auto-Router .....	10
Console Manager Entry Moved .....	10
New File Manager Features (Soundscape V6.1 only) .....	11
Search Function and Search Results View .....	11
Customisable column Order and File Sorting .....	11
Improved Unique Take Name Creator .....	11
Multi-Channel WAV/BWF Drag and Drop Support .....	11
New Transport Function (Soundscape V6.1 only) .....	12
Play/Repeat Memory .....	12
4. Fixed Software issues in V6.1 .....	13
Known Bugs fixed in Version 6.1 .....	13
Soundscape V6.1 only .....	13
5. Known Limitations in V6.1 .....	14
Windows 7 and Mixpander Cards Memory Limit .....	14
MX4 Cards and Legacy Plug-Ins requiring DSP Background Processing .....	14
MX4 Cards and multi-card Synchronisation .....	14
6. Soundscape V6.1 Keyboard Shortcuts .....	15
7. Support .....	18
8. Legal Disclaimer .....	19

# 1. Introduction

Welcome to the User Guide of the SSL Mixer and Soundscape Software Update V6.1.

This V6.1 User Guide presents an addendum to the V6.o SSL Mixer and Soundscape User Guides, only describing the changes and both should be read in parallel. (you can open both Guides by using the entries inside Menu |Help in your SSL Software)

---

Please register your SSL audio card and the SSL Soundscape V6 Software on our website. This will ensure that you receive notifications of future software and driver upgrades and other important information, and that your guarantee is registered. Registration will also make you eligible for technical support. Visit us at: [www.solidstatelogic.com](http://www.solidstatelogic.com)

---

Solid State Logic is committed to the development and marketing of professional solutions for native PC and Mac based digital audio recording systems.

The SSL Soundscape V6.1 DAW, the SSL Mixer V6.1 and MX4/Mixpander cards, used in combination with our XLogic Alpha-Link audio converter products, provide a flexible, professional quality, high channel count audio solution for PC based audio recording, editing and mixing.

## How to use this manual

---

The SSL product range has been designed from the ground up to be easy to use. If you are familiar with the Windows environment, installing PCIe, and PCI cards and the basics of recording and playing back digital audio, you could probably just set the system up and feel comfortable running a session within an hour.

However, SSL Mixer/Soundscape V6 offers a wealth of powerful and helpful features that you will only discover quickly by reading the main V6.o User Guides and in addition this V6.1 Addendum.

Each entry inside this Addendum contains a reference to the main Chapter within the V6 User Guides, that you can open in parallel by using the entries inside Menu |Help in your SSL Software.

**MX p.23** Reference to SSL Mixer V6.o Manual

**SS p.57** Reference to SSL Soundscape V6.o Manual

Please make sure you understand the **Master Clock** and **Sample Rate** concepts and that you understand the software's hardware settings. It is also a good idea to have the system switched on while you read the manual, so that you can experiment with the features you read about.

We trust that you will soon feel confident creating and using your own Projects. However, even when it has become second nature, the comprehensive Table of Contents (located at the beginning) and the search function in your PDF reader software will provide convenient ways to check specific information whenever you need it.

**If possible: Please do not print this manual.**



---

**IMPORTANT:** This Manual does **not** contain an **Index**. Please use your **PDF Reader's built in search function** to find the sections containing specific words and topics.

---

## 2. Installing V6.1 Software

### Important Preparations

---

Before installing the **SSL Mixer/Soundscape V6.1 software Update**, please ensure that you have successfully completed the Hardware Installation as described in the **MX4 Installation Manual**, and also have updated the **SSL Soundscape Driver Update (6.1.0.0 or later) including the Firmware Update of the MX4 to V19**, otherwise you will not be able to successfully install or work with the SSL SOUNDSCAPE or Mixer V6 application.

---

The files required for the following Installation can be downloaded from the SSL website.

In order to avoid any complications during software installation please follow these steps in the order indicated.

1. Make sure you have installed the MX4 Hardware and Drivers properly. If you have an internet connection, please download and use the most recent version, available from the SSL website.
2. Run the SSL SOUNDSCAPE/MIXER V6 Combo Installer. (Both SSL Applications are installed with the same Installer)
3. If you want to remote control the SSL SOUNDSCAPE or Mixer V6.1 with a Hardware/Fader Remote, please also install the Console Manager Plug-In.

**If you are installing the Software on this PC for the first time** (i.e. no V6.0 Software has been installed on this PC before):

4. Start the SSL Mixer or Soundscape V6.1 Software and follow the Instructions of the Unit Configurator. Make sure the Software runs properly.
5. Enter the Mix Password you find on your MX4 Registration card, under Options|Passwords|V2.xx Mixer starting with the letter M.
6. Enter the SSL Console EQ Password you find on your MX4 Registration card (SEQ), under Options|Passwords|SSL Console EQ starting with the letter M.
7. Enter the SSL Console Dynamics Password you find on your MX4 Registration card (SCD), under Options|Passwords|SSL Console Dynamics starting with the letter M.
8. Enter the SSL Bus Compressor Password you find on your MX4 Registration card (SBC), under Options|Passwords|SSL Console Bus Compressor starting with the letter M.
9. Enter the SSL Audio Toolbox Password you find on your MX4 Registration card (ATB), under Options|Passwords|Audio Toolbox (Part X) starting with the letter M. You only have to enter the password once.
10. Enter the SSL Soundscape V6 Password you find on your Soundscape V6 web shop receipt or in your MySSL account online (SS6), under Options|Passwords|Soundscape Version 6 starting with the letter M.
11. Enter the Time Module Password you find on your Soundscape V6 web shop receipt or in your MySSL account online (XTM), under Options|Passwords|XPro Time Module starting with the letter M.
12. Connect your Converter or MADI Console and set Clocking and MADI Mode under Settings|Master Clock and Settings|MADI|MADI Mode.
13. Ensure that the SSL Soundscape V6 Software runs properly. Under Settings|Save Settings you can make your changes permanent.

## Compatible SSL Audio Cards

SSL Soundscape V6 is designed to take advantage of the new SSL MX4 Card's DSP and Audio Core Technology and is optimised for modern Multi-CPU Processors and Windows 7.

For best results please use the following SSL Audio Cards:

### MX4

MX4 PCIe card features two MADI inputs and two MADI outputs, providing 128 simultaneous inputs and outputs at up to 48kHz, or 64 simultaneous inputs and outputs at up to 96kHz. And a set of SSL optimised hardware DSPs that allows it to perform the most demanding mixing tasks.

In order to properly work with Software V6.1, **MX4 Cards needs Firmware Version 19** or higher.

Please open **Track.exe** from the **Driver 6.1.0.0 Installation Folder** and, in case a lower FW Version is currently on the MX4 Card, follow the Instructions of the Firmware Update Service, that will automatically launch.

### Mixpander

The SSL Mixpander PCI card can accept up to 64 simultaneous I/O at 48KHz via its expansion port when connected to an SSL Alpha-Link interface. Soundscape V6 can use up to two Mixpander Cards simultaneously.

NOTE: Soundscape V6.1 can also integrate legacy Soundscape Systems (REd 16-32, SS16-32) as I/O (when connected to a Mixpander Card) and/or Sync Unit (when connected to a PCI Host Card). For more information about the integration of legacy Soundscape Systems into a Soundscape V6.1 setup, please visit our FAQ Section online, where you will find useful information and application notes.

<http://www.solidstatelogic.com/music/soundscape/faq.asp>

## System Requirements

The **SSL MX4 PCIe** card and the **SSL Mixer / Soundscape V6.1 Software** are compatible with the following operating systems and driver protocols:

Platform	Operating System	Driver Protocols
PC with 32 Bit Windows	Windows XP SP2 or later	ASIO 2.x (32 Bit) ,WDM,MME,GSIF2,DWave, SSL SS V6
	Windows Vista SP1 or later	
	Windows 7 or later	
PC with 64 Bit Windows	Windows Vista SP1 or later	ASIO 32 Bit, ASIO 64 Bit, SSL SS V6 (WDM 64 Bit in preparation)
	Windows 7 or later	

**MAC OSX:** MX4 can run under OSX Leopard V10.5.8 or greater and on OS X Snow Leopard V10.6.1 or later (32bit and 64 Bit) by using MadiXtreme Core Audio Drivers. Under MAC OS the MX4 Card works as a MadiXtreme 128. The Mixer Software and DSP Plug-Ins however, do not work with MAC OS.

The **SSL MX4** comes with low-latency MME drivers, WDM drivers, ASIO-2 drivers, DWave drivers and GSIF drivers for Windows XP and Vista. It can be used with any PC based MIDI & Audio sequencer, recording and editing software or other audio applications. The **SSL Soundscape Drivers** are truly multi client, allowing you to share your SSL audio hardware between several applications that use different driver models.

The **SSL Mixpander PCI** card and the **SSL Mixer / Soundscape V6.1 Software** are compatible with the following operating systems and driver protocols:

Platform	Operating System	Driver Protocols
PC with 32 Bit Windows	Windows XP SP2 or later	ASIO 2.x (32 Bit) ,WDM,MME,GSIF2,DWave, SSL SS V6
	Windows Vista SP1 or later	
	Windows 7 or later	
PC with 64 Bit Windows	Windows Vista SP1 or later	ASIO 32 Bit, ASIO 64 Bit, SSL SS V6 (WDM 64 Bit in preparation)
	Windows 7 or later	

The **SSL Mixpander** comes with Low-latency MME drivers, WDM drivers, ASIO-2 drivers, DWave drivers and GSIF drivers for Windows XP and Vista. It can be used with any PC based MIDI & Audio sequencer, recording and editing software or other audio applications. The **SSL Soundscape Drivers** are truly multi client, allowing you to share your SSL audio hardware between several applications that use different driver models.

## System Recommendations

---

SSL Mixer / Soundscape V6.1 was designed for the **latest** PC Core Technology (CPU's, Chipsets, HDD's) and **Windows 7** Operating Systems.

As technology is constantly evolving, for up to date System Recommendations and a list of Soundscape V6.1 certified Turnkey Systems from 3rd Party vendors, please visit our System Spec page at: <http://www.solidstatelogic.com/music/soundscape/specs.asp>

## 3. New Software Features in V6.1

### Multi-column Mixer editing

MX p.36

SS p.89

The creation and editing of Mixers has been vastly improved by allowing the selection and manipulation of multiple Mixer columns simultaneously.

#### Selecting multiple Mixer columns

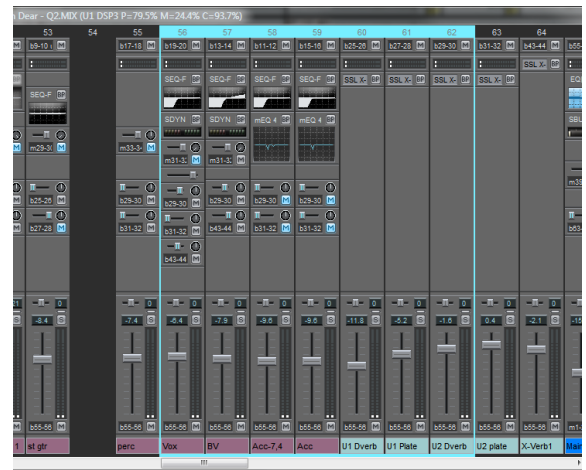
Column selection is only available in Mixer Edit Mode. To Enter Mixer Edit Mode press the **E** key or click the Mixer Control/Edit Toggle Button on the Mixer.

To select a column or range of columns hold down the **Shift** key and click with the mouse on the first column (either on the **slot No. area**, an empty area in the **User definable strip area** or the **Scribble Strips**) of the Mixer column.

Keep the Shift key pressed and click on the last column you want to select, either to the left or to the right.

To select individual, non adjacent columns, hold down the **CTRL** key and click with the mouse on the columns you want to select (either on the **slot No. area**, an empty area in the **User definable strip area** or the **Scribble Strips** of the Mixer column).

This will allow you to select or deselect random columns.



#### NOTES:

- Clicking on any Mixer Element or I/O Label Section inside a Mixer Strip doesn't select a column.
- Empty column slots, that do not contain a Strip, are not selectable.
- Editing single columns, i.e.. inserting a new Mixer Strip or inserting a Mixer Element and Changing I/O assignments, selects this column automatically. The behaviour therefore has not changed compared to previous SSL Mixer and Soundscape Versions.

#### Editing the Mixer with multiple columns selected

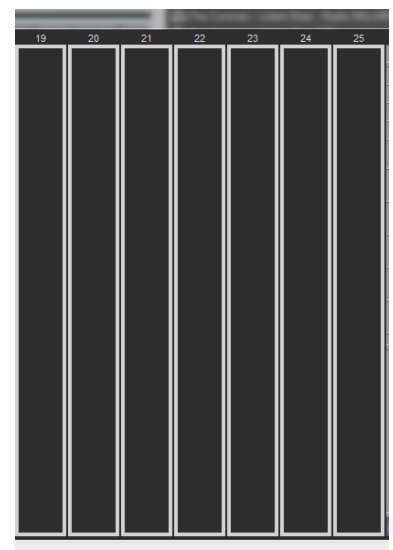
##### Moving/Copying multiple columns

Moving or copying multiple columns basically works in the same way as moving/copying single columns did in previous versions of the software.

When dropping the first column of the selection to a certain column slot, the Mixer will automatically create the necessary space to fit all moved/copied columns by shifting the existing columns to the right. Empty spaces between shifted columns will not be preserved.

If you are moving/copying non adjacent columns, the Mixer will automatically "clean up" spaces between those columns and move/copy them as adjacent columns.

While Move/Copy an outline of the selected columns will be displayed as long as the mouse button is pressed to allow precise positioning.



## Change I/O's on multiple selected columns

Any Mixer Element, that contains an I/O assignment area (Inputs/Outputs/Sends), can now be changed on multiple selected columns simultaneously.

Using the I/O assignment tool on any element within the current column selection, will change the **identical\*** elements on all selected columns to the chosen I/O value.

Pressing and holding the **CTRL key** while clicking on a certain element inside the column selection, will only change this element to the chosen I/O and automatically **decrement** this value on elements residing on selected columns to the left and **increment** on selected columns to the right.

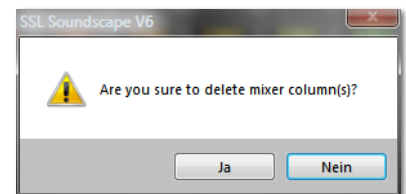
---

### \*IDENTICAL ELEMENTS:

- The Mixer only considers elements to be identical across columns, if they are using the same element type and their visual vertical position inside the Mixer strip is vertically overlapping or the same.
  - If two of the same element type are visually overlapping (i.e.. 2 Send Elements), the top element will be changed.
  - Mixer strips, I/O's and Sends with a different channel count or routing layout (i.e.. Mono->Mono/Mono->Stereo; Stereo Send/ Stereo EPP Send) are **not** considered to be identical, regardless of their vertical visual position.
- 

## Deleting Multiple columns

Pressing the DEL Key or using the Trash Tool on multiple selected columns will open the confirmation dialogue, if all columns should really be deleted. There is NO UNDO for this operation.



## Tools that do not work with multiple columns Selection

Certain Tools for Mixer editing do not work on multiple columns (i.e.. Create Tool, Info Tool). For example, in case multiple columns are selected when using the Info Tool on a certain element or column, will automatically cancel the multi-selection and only this single column is selected.

---

**CAUTION:** SSL Mixer and Soundscape V6.1 do currently **not support an Undo/Redo History** for Mixer changes. Save your Mix frequently while using the multi-column editing, since you may change/delete a lot of work with only one mouse-click.

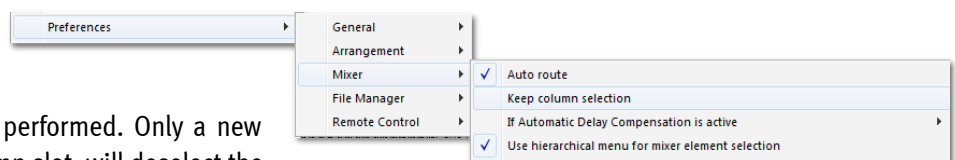
---

## Keep Mixer column Selection

MX p.84

SS p.193

If this option is active (ticked) a multiple column Selection remains active, even if a Mixer Edit has been performed. Only a new selection or selection of an empty column slot, will deselect the current selection.



This option is similar to the behaviour of the Option "Keep Part Selection" in the Arrangement.

## Save individual columns and Partial Mixers

MX p.75

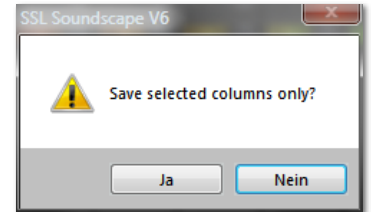
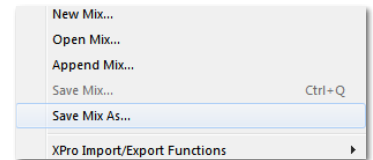
SS p.161

With V6.1, 'selected' columns can be saved as a Mix file. This allows you to save single channel-strip settings or instrument templates and also to create a more complex set of channels that represents a complete recording infrastructure, like a Guitar Recording "Environment", consisting of 3 Inputs (Direct, Cabinet, NS10) and 3 FX Channels.

### Procedure

Select one or multiple columns. Click on menu File | Save Mix As...

A dialogue box asks if you only want to save the selected columns or the whole Mixer (consistent with the behaviour of Save ARR as... while Parts are selected inside the Arrangement).



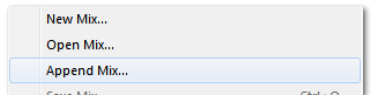
## Append Mixer File

MX p.75

SS p.161

Mixer Files can now be appended to the currently opened Mixer.

The additional Mixer will be appended after the last column of the existing Mixer or in the first free space it finds to fill in the additional columns (i.e.. a couple of empty column slots).



## Drag and Drop Mixer File into current Mixer

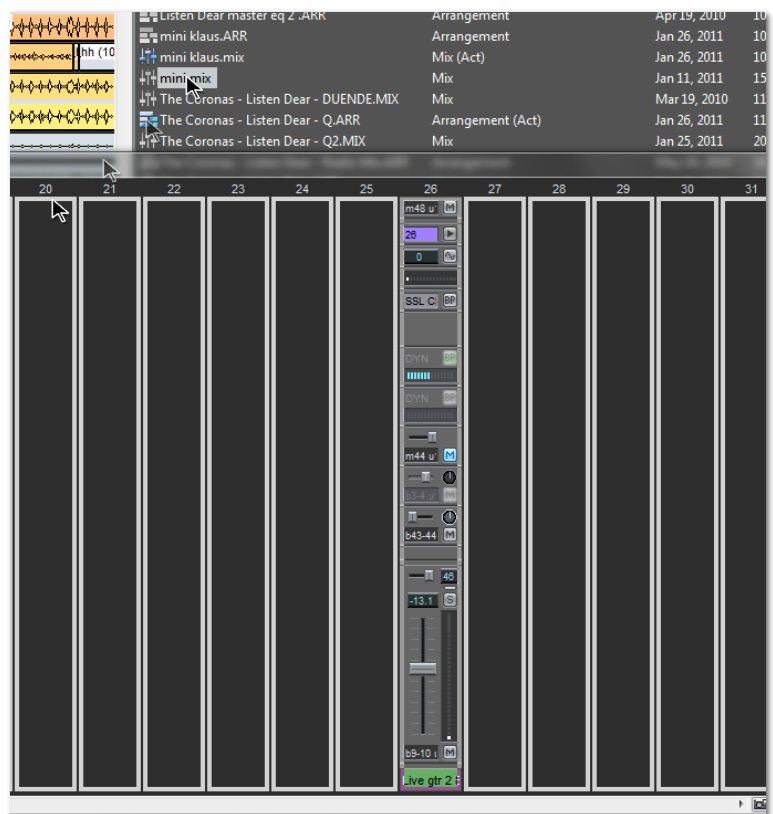
MX p.75

SS p.147

While in Mixer Edit Mode, a Mix File can be dragged from File Manager or Windows Explorer onto the Mixer Window and dropped on a certain column slot.

A graphical preview outline of the added columns will be displayed as long as the mouse button is pressed to allow precise positioning.

The Mixer will automatically shift existing columns to the right to create the necessary space.



The DSP Auto Router Algorithm takes care of spreading the DSP load of Mixer Elements equally across all available DSP's. While Mixer editing, when more Mixer columns and Processing elements are added, the DSP Auto Router needs to constantly adapt the DSP resources to the Mixer Layout.

In order to prevent DSP overloads on large Mixers inside the MX4 DSP's, the improved Auto-Router Algorithm can now follow various strategies to maintain flawless operation even with very complex routings, many DSP elements and DSP Plug-Ins, that do not report the required DSP processing power properly at all times.

Since a Mixer column can only be processed on a single DSP, there are cases, where the Auto-Router cannot maintain an equal load across all DSP's.

---

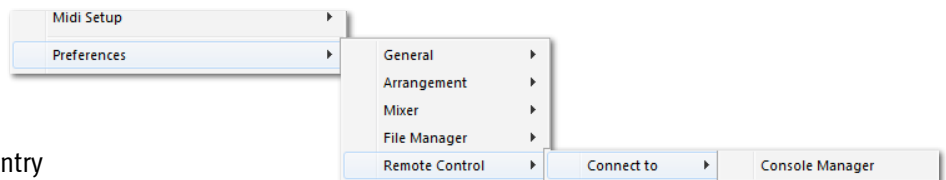
NOTE: The Auto-Router Resource Management relies on the Sample Rate settings. If the MX4 is externally clocked and the actual clock is higher than the set Sample Rate value (i.e.. positive Varispeed values), the measured DSP requirements may be higher than the displayed resources in the Mixer Window Top Bar.

---

## Console Manager Entry Moved

The Preference  
**Connect to Console Manager**

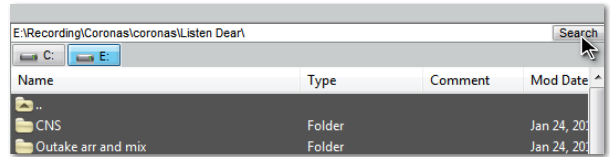
has been moved to the new Preference Entry



Settings | Preferences | Remote Control | Connect To | Connect to Console Manager.

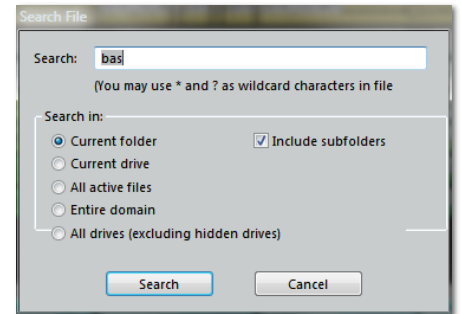
## Search Function and Search Results View

The File Manager Window now contains an advanced Search Function.



Click the **Search** Button to open the Search Dialogue.

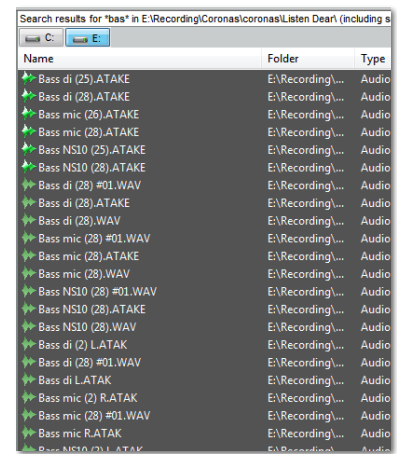
Simply type the word or parts of the word you want to search for and hit the Search Button.



The search results will be displayed in the main File Manager Window.

You can audition the results, drag Audio/Automation Files to the Arrange Window or Double Click Arr and Mix files, to open them.

To return to the standard folder view inside the last displayed folder just click once on the active Drive Button in the Top Drive Bar.



### Wildcards

Unlike previous Soundscape Editor search functions you do not have to add wildcards (\* before or after the term you are searching for) anymore, but you can still add the \* wildcard, to specify if you like.

To Filter the results by file type, you can change the sorting of your results to File Type.

## Customisable column Order and File Sorting

The column Headers in the File Manager Window can now be rearranged by dragging them to the left or right.



**Sorting of columns** now works on all columns, repeatedly pressing a column Header toggles between incremental and decremental sorting.

## Improved Unique Take Name Creator

The Algorithm to create unique filenames (adding ID extensions to the Mixer column Names) for new recorded takes has been greatly improved, Improvements in recording start-up delay are especially noticeable when recording many Tracks at the same time into a folder with many existing Takes based on the same names.

## Multi-Channel WAV/BWF Drag and Drop Support

Multichannel WAV and BWF files can now be directly dragged from Windows Explorer into the Arrangement. The necessary splitting into Mono Files will be done by Soundscape V6.1 on the fly.

### Play/Repeat Memory

When the **Play** Button (Up Arrow) is pressed while Soundscape is in **Play Mode**, the Play Pointer will return and to the Position where Play was initially started from and playback will stop.

Pressing **Play** again will start Playback from this position.

This is very useful to check an Edit or a Song Section several times, without having to create Markers or Locators, simply by **pressing Play twice** while in **Play Mode**.

When Stop (Down Arrow) or the Play/Stop Toggle (Spacebar) is pressed, the current (new) Play Pointer position will be stored as temporary memory.

## 4. Fixed Software issues in V6.1

### Known Bugs fixed in Version 6.1

#### Soundscape V6.1 only

##### SS 32 Sync Error

When slaving to MTC/LTC via SS32 (as U1), Mixpander/iBox/Alpha-Link Units (U2 or higher) had a 1/2 sec Time Code offset error.

##### Mixdown Tool Crash

When using VST Plug-Ins inside the current Mixer, Mixdown Tool crashed.

##### Arrange and File Manager Focus Keys

When "Arr+FMan Docking" was enabled (K), the focus keys (A+D) did not set the active Window.

##### Current Locator (Play Pointer)

Did not wrap immediately to the Arrange Window Start in follow mode.

##### File Manager

Did not return to last viewed Path after closing and reopening the File Manager Window.

##### Scrub Tool Crackles

Scrubbing created crackling noise on any Track with the Solo and All Scrub Tool (or remotely by Scrub Wheel).  
New Smooth Scrub Algorithm has been introduced.

## 5. Known Limitations in V6.1

### Windows 7 and Mixpander Cards Memory Limit

Since Windows Vista SP1, Microsoft has changed PCI Bus Drivers. This has caused an incompatibility with the Mixpander DSPs on most modern PC chipsets, that manifests as noise if more than 2GB of RAM are installed.

This problem affects 32 bit and 64 bit versions of Vista and Windows 7.  
The only solution at present is to limit affected systems to 2 GB of installed RAM.

MadiXtreme and MX4, which are PCIe cards and use different DSPs, are not affected by this problem.

### MX4 Cards and Legacy Plug-Ins requiring DSP Background Processing

Background: MX4 uses a completely redesigned DSP Infrastructure and DSP Firmware than any previous Soundscape Hardware.

A functionality called "DSP Background Processing" has not yet been implemented, as it may create incompatibilities between MX4 and Mixpander.

Effect: Acuma Labs (SatFat and FinalMix), Cedar De-Hiss and Dolby DSP Plug-Ins rely on DSP background processing and do not operate on the MX4 DSP Engine yet. The Plug-Ins will not pass Audio from it's Inputs to the Outputs.

Workaround: There is no workaround at the moment. Placing those Plug-Ins on a Mixpander Card and feeding the Mixpander channel with audio originating from MX4 Columns will however work.

SSL is still investigating on how to fix this. Unfortunately this is not something, that is easy to fix while maintaining compatibility with multiple DSP operating systems.

### MX4 Cards and multi-card Synchronisation

Background: V19 of the MX4 Firmware does neither process nor generate Worm-Clock. Worm-Clock is an SSL proprietary modulation of standard Word-Clock, where position and start commands are interchanged between different SSL and Soundscape legacy devices sample accurately.

With current firmware (V19) multiple MX4 cards are frequency synchronous, but not sample aligned therefore sample delays between different cards outputs will be measured. These will be typically between 1-100 samples and this will probably be unnoticeable in use, except where phase coherent sources are split between outputs from different cards. We advise avoiding this when multiple MX4 cards are used in the same system.

---

Please check the SSL Website frequently for Software, Driver and Documentation updates at:

<http://www.solidstatelogic.com/music/soundscape/index.asp>

For up to date FAQ's, please visit our Soundscape FAQ section here:

<http://www.solidstatelogic.com/support/Soundscape/faq.asp>

---

## 6. Soundscape V6.1 Keyboard Shortcuts

File		Edit	
Open Arr	CTRL+O	Create	ALT+1
Append Arr	CTRL+A	Track Assign	CTRL+1
Save Arr	CTRL+S	Move	CTRL+M
Save Mix	CTRL+Q	Move Vert	CTRL+SHIFT+M
Exit	ALT+X	Move Loc	CTRL+ALT+M
Tape		Copy	CTRL+C
Go to Begin	Home	Copy Vert	CTRL+SHIFT+C
Go to End	End	Copy Loc	CTRL+ALT+C
Go to Prev Snap	SHIFT+LEFT	Cut	CTRL+X
Go to Next Snap	SHIFT+RIGHT	Cut Loc	CTRL+ALT+X
Go to Prev Part Border	CTRL+LEFT	Volume Tool	CTRL+V
Go to Next Part Border	CTRL+RIGHT	Vol Fade In	CTRL+E
Rew	LEFT	Vol Fade Out	CTRL+F
Fw	RIGHT	Vol Trim	CTRL+SHIFT+V
Stop	DOWN	Trim	CTRL+T
Play	UP /2x UP = Repeat	Trim Adjacent	CTRL+ALT+T
Rec	NUM ADD	Scrub Solo	CTRL+B
Go to Left Loc	ALT+L	Scrub All	CTRL+SHIFT+B
Go to Right Loc	ALT+R	DC Offset	CTRL+SHIFT+N
Auto Punch In	CTRL+ALT+I	Normalize	CTRL+N
Auto Punch Out	CTRL+ALT+O	SRate	CTRL+SHIFT+S
Loop	Y	Pitch	CTRL+SHIFT+P
Arm Audio Trk	NUM MULTIPLY	Time Stretch	CTRL+SHIFT+T
DisArm Audio Trk	NUM DIVIDE	Reverse Tool	CTRL+SHIFT+R
		Mute	CTRL+U
		Glue	CTRL+G
		Crop	CTRL+3
Various Mouse + Key Actions		RClick=Right Click, LClick= LeftClick, DClick=Double Click	
Create Record Track (Audio/Auto)		RClick RecTrkcolumn (Left side Arr Window)	
Centre Current Loc in Arr Window		C	
Place Left Locator at Current Loc		L	
Place Right Locator at Current Loc		R	
Preview Take in File Manager		RClick+hold on icon/name +move mouse	
Add Marker at Current Loc		INSERT	
Add Numbered Marker at Current Loc		(Enter Marker No)+INSERT	
Move Current Loc to Marker		(Enter Marker No)+DOWN	
Move Current Loc to Marker		RClick in Marker Window	
Move Current Loc to Marker & Play		(Enter Marker No)+UP	
Move Marker to Current Loc		(Enter Marker No)+ ENTER	
Move Left Locator to here		LClick on Time Axis Bar	
Move Right Locator to here		RClick on Time Axis Bar	
Move Current Loc to here		SHIFT+LClick on Time Axis Bar	
Move Current Loc to L Loc		LClick on Left Loc Button (below Display)	
Move Current Loc to R Loc		LClick on Right Loc Button (below Display)	
Song Position (User Enter Value)		LClick on Song Position Time Display	
Current Locator (User Enter Value)		LClick on SMPTE Time Display	
Left Locator (User Enter Value)		LClick on Left Locator Time Display	
Right Locator (User Enter Value)		LClick on Right Loc Button (below Display)	
Sign (User Enter Value)		LClick on Sign Display	
Tempo (User Enter Value)		LClick on Tempo Display	

<b>Edit cont.</b>	<b>Global</b>		
Noise Gate	<b>CTRL+K</b>	Cut/Ins L<->R	<b>SHIFT+I</b>
Waveform	<b>CTRL+W</b>	Cut/Del L<->R	<b>SHIFT+D</b>
Info	<b>CTRL+I</b>	Cut/Sel L<->R	<b>SHIFT+C</b>
Delete	<b>CTRL+D / DEL</b>	Cut at Current Loc	<b>SHIFT+F</b>
Stereo Link	<b>CTRL+L</b>	Move select'd Parts to L Loc	<b>SHIFT+Q</b>
Multi-Ch Link	<b>CTRL+4</b>	Copy select'd Parts to L Loc	<b>SHIFT+W</b>
Slip	<b>CTRL+J</b>	Select all Parts	<b>SHIFT+A</b>
Invert Phase	<b>CTRL+P</b>	Select all P's same virtual TRK	<b>SHIFT+V</b>
Repeat	<b>CTRL+R</b>	Select all P's same OUT	<b>SHIFT+O</b>
Timelock	<b>CTRL+SHIFT+L</b>	Select all P's same TAKE	<b>SHIFT+T</b>
Auto-Curve Select	<b>CTRL+SHIFT+A</b>	Select all P's Part to End	<b>SHIFT+G</b>
Auto Event Edit	<b>CTRL+SHIFT+E</b>	Select all muted Parts	<b>SHIFT+M</b>
Thin Auto Events	<b>CTRL+SHIFT+F</b>	Select Timelocked Parts	<b>SHIFT+K</b>
Context Sensitive	<b>CTRL+2</b>	Select P's L<->R Loc	<b>SHIFT+S</b>
Snap Point Edit	<b>CTRL+SHIFT+D</b>	Select P's L Loc -> End	<b>SHIFT+R</b>
Mixe Edit	<b>E</b>	Unselect all Parts	<b>SHIFT+U</b>
Auto Eneble	<b>G</b>	Invert Part selection	<b>SHIFT+X</b>
ADC	<b>CTRL+ALT+D</b>	Set L+R Loc start/end sel P's	<b>SHIFT+L</b>
Auto Snapshot	<b>F</b>	Set L Loc sel P's end	<b>SHIFTE</b>
Zoom IN H	<b>ALT+RIGHT</b>	Set R Loc sel P's begin	<b>SHIFT+B</b>
Zoom OUT H	<b>ALT+LEFT</b>	Flatten Arrangement	<b>CTRL+SHIFT+K</b>
Zoom IN V	<b>ALT+UP</b>	Compute Tempo L<->R	<b>CTRL+SHIFT+J</b>
Zoom OUT V	<b>ALT+DOWN</b>	<b>Settings</b>	
Scroll L	<b>CTRL+ALT+LEFT</b>	Sync In = OFF (Master)	<b>M</b>
Scroll R	<b>CTRL+ALT+RIGHT</b>	Sync In = MTC (SS32)	<b>S</b>
Scroll U	<b>CTRL+ALT+UP</b>	Sync In = LTC (SS32+Sync Opt.)	<b>O</b>
Scroll D	<b>CTRL+ALT+DOWN</b>		
<b>Settings</b>			
Select Multiple Parts in Arr	<b>Hold Down Ctrl, LeftClick on Parts</b>		
Select all Parts from Sel Prt to End	<b>Hold Down Shift &amp; Control, LeftClick on Part</b>		
DEL select'd Parts (ArrWind active)	<b>DELETE key</b>		
DEL select'd File/Folder (FileManWind active)	<b>DELETE key</b>		
DEL select'd Marker(s) (MarkWin active)	<b>DELETE key</b>		
Mixer Inactive Build	<b>Hold SHIFT while editing mixer</b>		
(... to enable an Inactive Mixer)	<b>... last mixer edit w/o SHIFT</b>		
(... to enable an Inactive Mixer)	<b>DClick Mix Window caption bar</b>		
Select tool to L or R mouse button	<b>LClick or RClick on tool in ToolBar</b>		
Select tool to Alt+L or Alt+R mouse	<b>ALT+LClick or ALT+RClick on tool in ToolBar</b>		
Up a tool page	<b>RClick on ToolBar page icon</b>		
Down a tool page	<b>LClick on ToolBar page icon</b>		
Customize Context Sensitive Edit Tool	<b>DClick on SwissArmyKnife Icon</b>		
Customize Cross-Fade Settings	<b>DClick on CrossFade Tool</b>		
Customize ToolBar Settings	<b>DClick on blank part of ToolBar</b>		
Zoom Box (for Arr... to zoom in)	<b>LClick Zoom Tool-&gt; draw zoom</b>		
Zoom Out (for Arr... to zoom out)	<b>DClick ZoomTool</b>		
Magnify Waveform display in Part	<b>RClick on Zoom IN Vert</b>		
Un-Magnify Waveform display in Part	<b>RClick on Zoom OUT Vert</b>		
Select Multiple SOLO buttons in Mixer	<b>Hold CTRL while LClick or RClick solo buttons</b>		
Select default response to Pop Up's	<b>Spacebar or Enter</b>		
Cancel Processing Tools	<b>Spacebar or Enter</b>		

<b>Settings cont.</b>	
Varispeed Up (+0.1%)	<b>ADD</b> (not NUM pad)
Varispeed Down (-0.1%)	<b>MINUS</b> (not NUM pad)
Snap Active - toggle	<b>H</b>
Follows Current Loc	<b>J</b>
O'lap Not Allowed	<b>N</b>
O'lap Allowed	<b>SHIFT+N</b>
Keep Part Selection	<b>SHIFT+G</b>
Auto Generate Waveform	<b>CTRL+SHIFT+W</b>
Auto Scroll Arr Window	<b>CTRL+SHIFT+I</b>
Adopt Output Assign	<b>CTRL+ALT+A</b>
Pass keyboard to mixer elem	<b>CTRL+ALT+K</b>
<b>View</b>	
Show Arrange window	<b>A</b>
Show Mix Window	<b>Q</b> (narrow) / <b>X</b> (wide)
Up a tool page	<b>Page Up</b>
Down a tool page	<b>Page Down</b>
Show Marker Directory	<b>W</b>
Show File Manager	<b>D</b>
DOCK Arr and File Manager	<b>K</b>
Time Code Display	<b>T</b>
Buffer Activity	<b>B</b>
Video Player	<b>V</b>
9-pin Window (SS32+Sync Opt.)	<b>U</b>
<b>Nudging with Move or Copy on left Mouse</b>	
1 Track Up	<b>LClick+UP</b>
1 Track Down	<b>LClick+DOWN</b>
Previous Snap Point	<b>LClick+LEFT</b>
Next Snap Point	<b>LClick+RIGHT</b>
<b>Trim Tool on left Mouse</b>	
Trim Part Previous Snap Point	<b>LClick+UP</b>
Trim Part to Next Snap Point	<b>LClick+DOWN</b>
<b>Slip Tool on left Mouse</b>	
Slip Part Previous Snap Point	<b>LClick+LEFT</b>
Slip Part Next Snap Point	<b>LClick+RIGHT</b>
<b>Snap Point Edit Tool on left Mouse</b>	
Reset Snap Point	<b>DoubleClick on Part</b>
<b>Volume&amp;FadeTool / Noise Gate Parameters PopUp</b>	
Increase sel fader (fast)	<b>Page Up</b>
Decrease sel fader (fast)	<b>Page Down</b>
Increase sel fader (slow)	<b>UP or LEFT</b>
Decrease sel fader (slow)	<b>DOWN or RIGHT</b>
<b>Context Sensitive Edit Tool (SwissArmyKnife)</b>	
Floating Dropdown Menu	<b>RClick on Part</b>
ZOOM	<b>RClick Part, move mouse</b>
Scroll Part in Arr Window	<b>ALT+RClick, move mouse</b>

## 7. Support

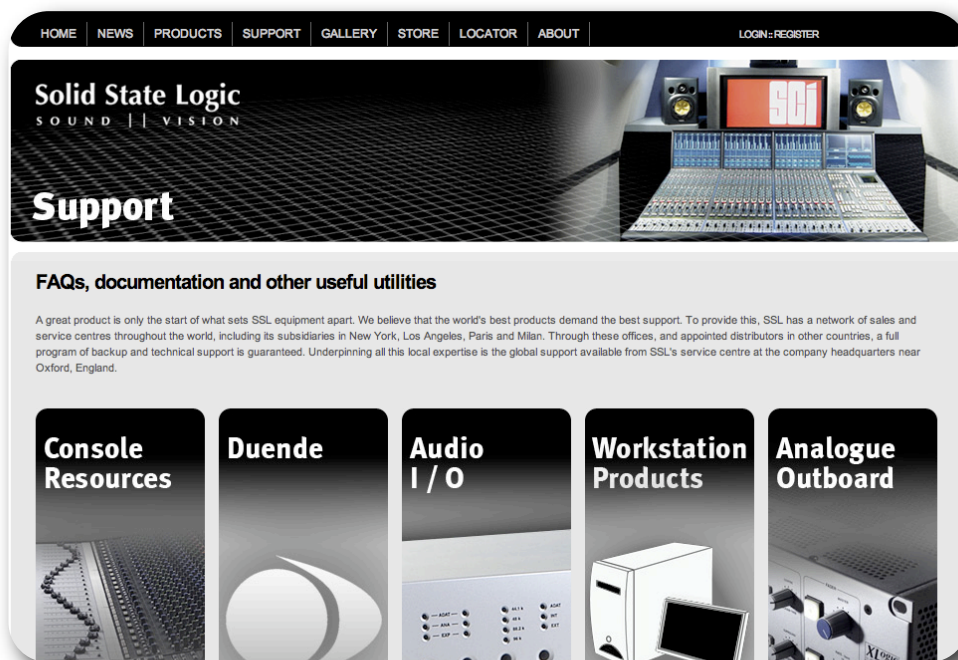
### Support, FAQs and Online Help Centre

To find the latest support information on SSL Soundscape and Mixer V6.1, MX4 or the SSL Console Bundle, please visit our online support site.

The information there is kept up to date by our support staff to ensure it is accurate. All information is available to you 24/7/365.

If you can't find an answer or a solution to your issue, you can submit a question via the site to our support staff for resolution.

URL: <http://www.solidstatellogic.com/support>



## 8. Legal Disclaimer

# Solid State Logic

S O U N D | | V I S I O N

Visit SSL at: [www.solid-state-logic.com](http://www.solid-state-logic.com)

© 1993-2011 Solid State Logic

All Rights reserved under International and Pan-American Copyright Conventions.

No part of this publication may be reproduced in any form or by any means, whether mechanical or electronic, without the written permission of Solid State Logic, Oxford, England

MX4, SSL Console Bundle, Soundscape, Soundscape 32, Mixpander, MadiXtreme, SL 4000 B/E/G Series, XL 9000 K Series, Solid State Logic, SSL, SSL Mixer V6, SSL Soundscape V6.1, Super Analogue and "made for MX4" are trademarks of Solid State Logic.

All other product names and trademarks are the property of their respective owners and are hereby acknowledged.

As research and development is a continual process, Solid State Logic reserves the right to change the features and specifications described herein without notice or obligation.

Solid State Logic cannot be held responsible for any loss or damage arising directly or indirectly from any error or omission in this manual.

E&OE