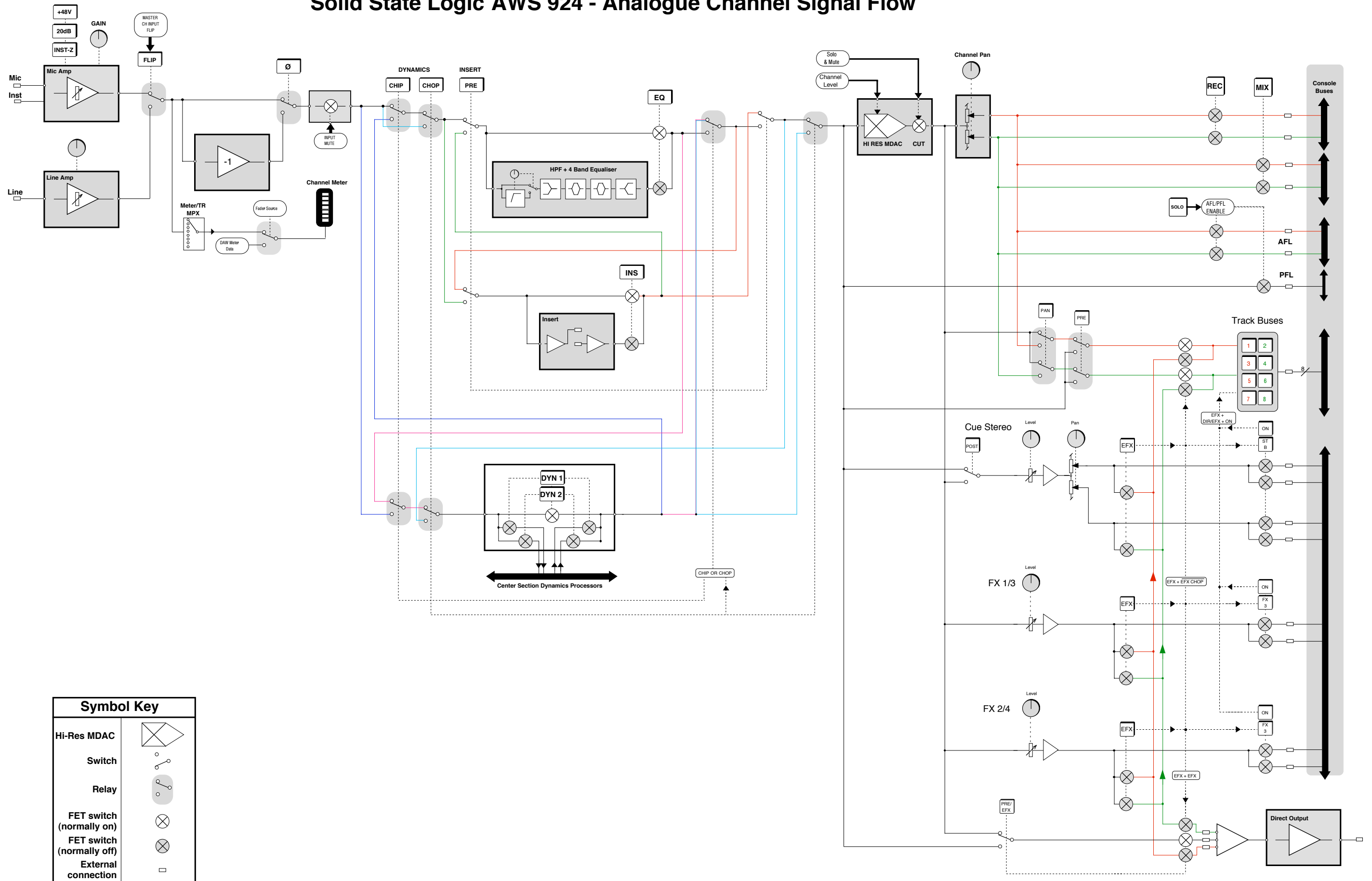


Solid State Logic AWS 924 - Analogue Channel Signal Flow



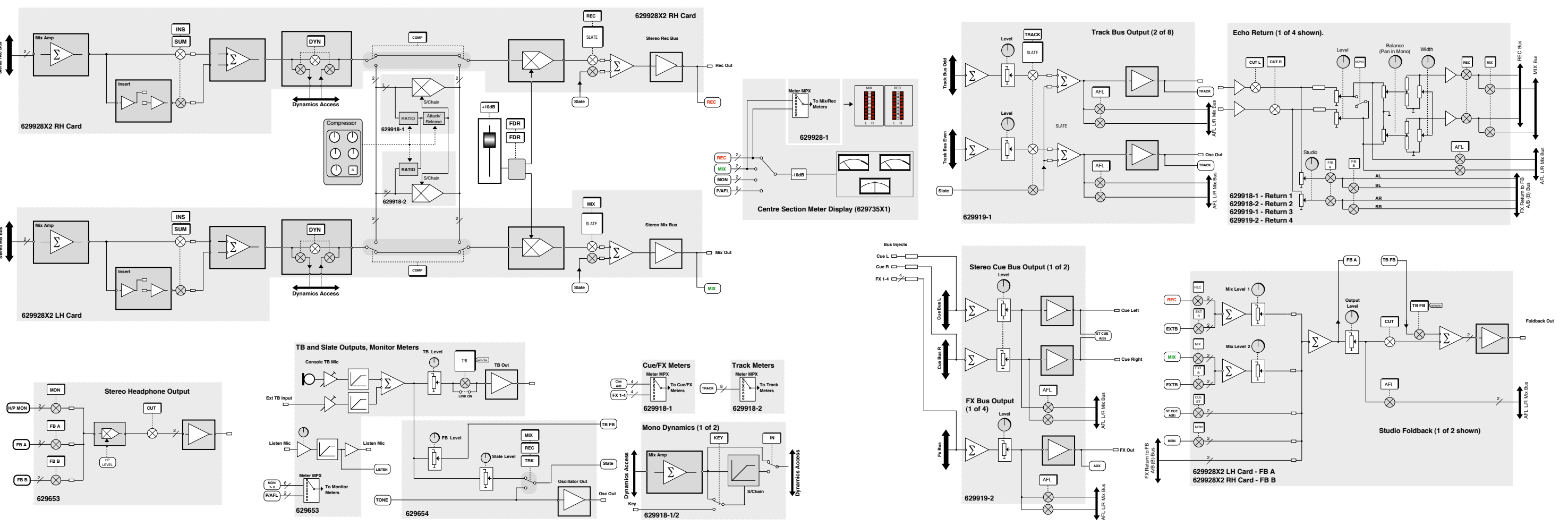
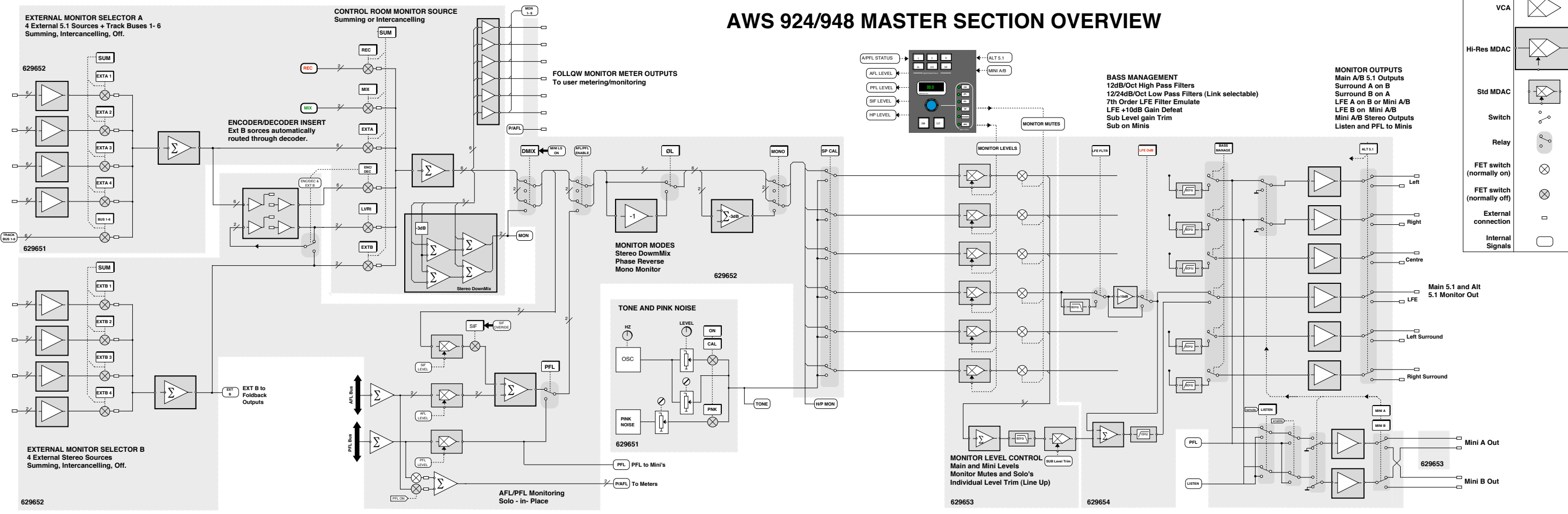
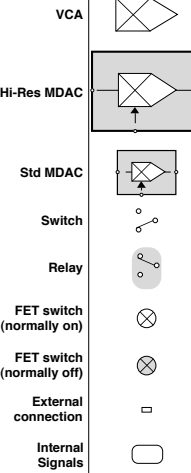
Symbol Key	
Hi-Res MDAC	
Switch	
Relay	
FET switch (normally on)	
FET switch (normally off)	
External connection	

AWS 924 CHANNEL BLOCK SCHEMATIC	Drg. No T85.924CH
	Rev: 1.0
	Date: 19/11/10
	Design: AWS 924
	Drawn: SD/RM
	Ref: AWS CH MD

© Solid State Logic

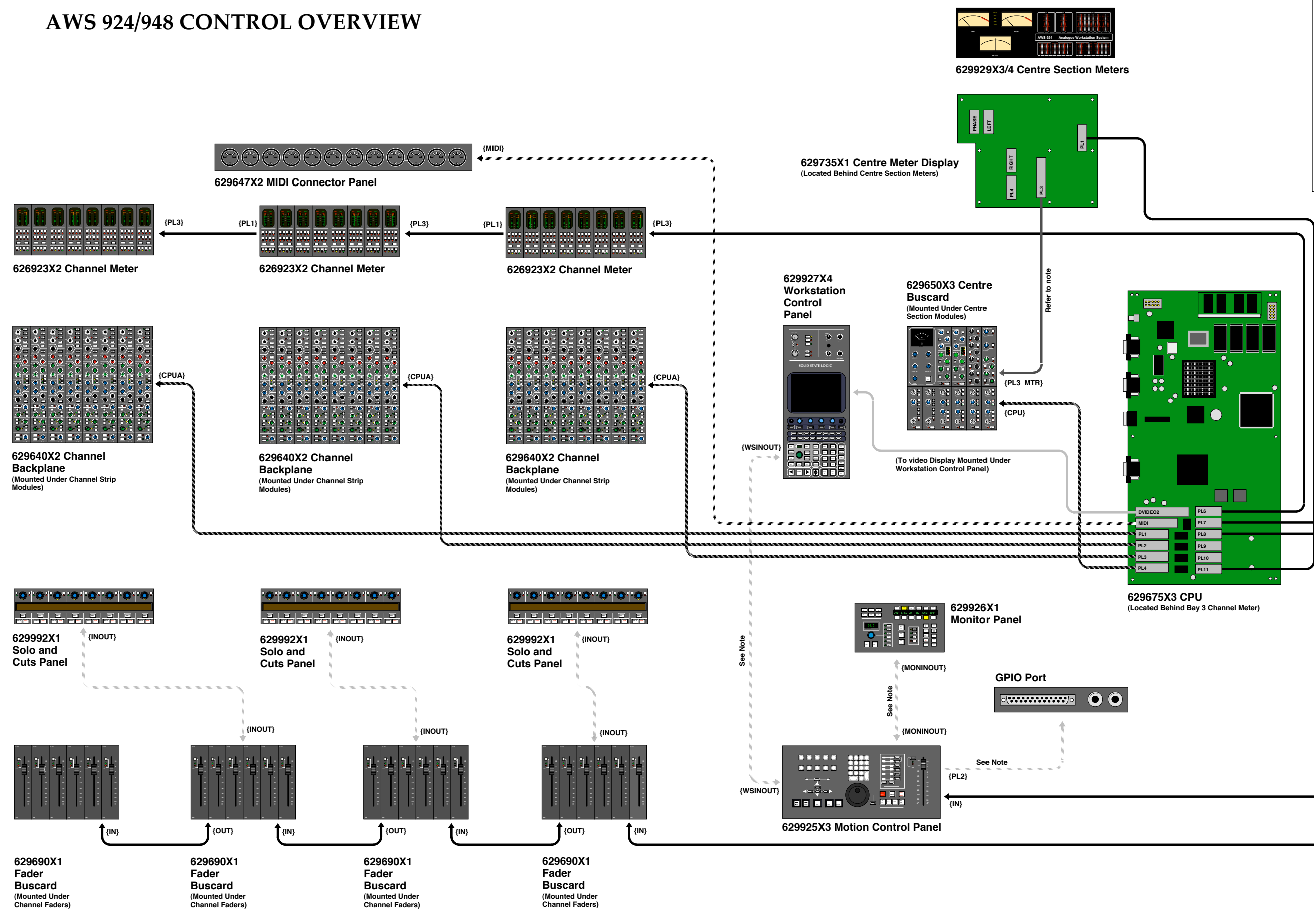
AWS 924/948 MASTER SECTION OVERVIEW

Symbol Key

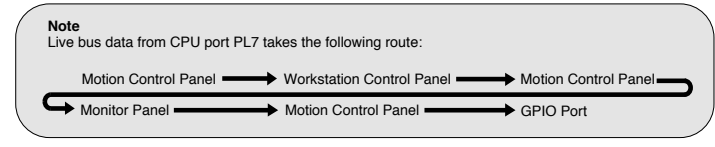


AWS 924/948 CONTROL OVERVIEW

Symbol Key	
Connector Label	{x}
Live Bus (16 pin IDC connector)	—————
Live Bus (16 pin PicoFlex connector)	—————
Multidrop Bus (20 pin IDC connector)	—————
Video Data (30 pin IDC connector)	—————
Midi Data (26 pin IDC connector)	—————
Live Bus + Power (18 pin Pico Flex connector)	—————

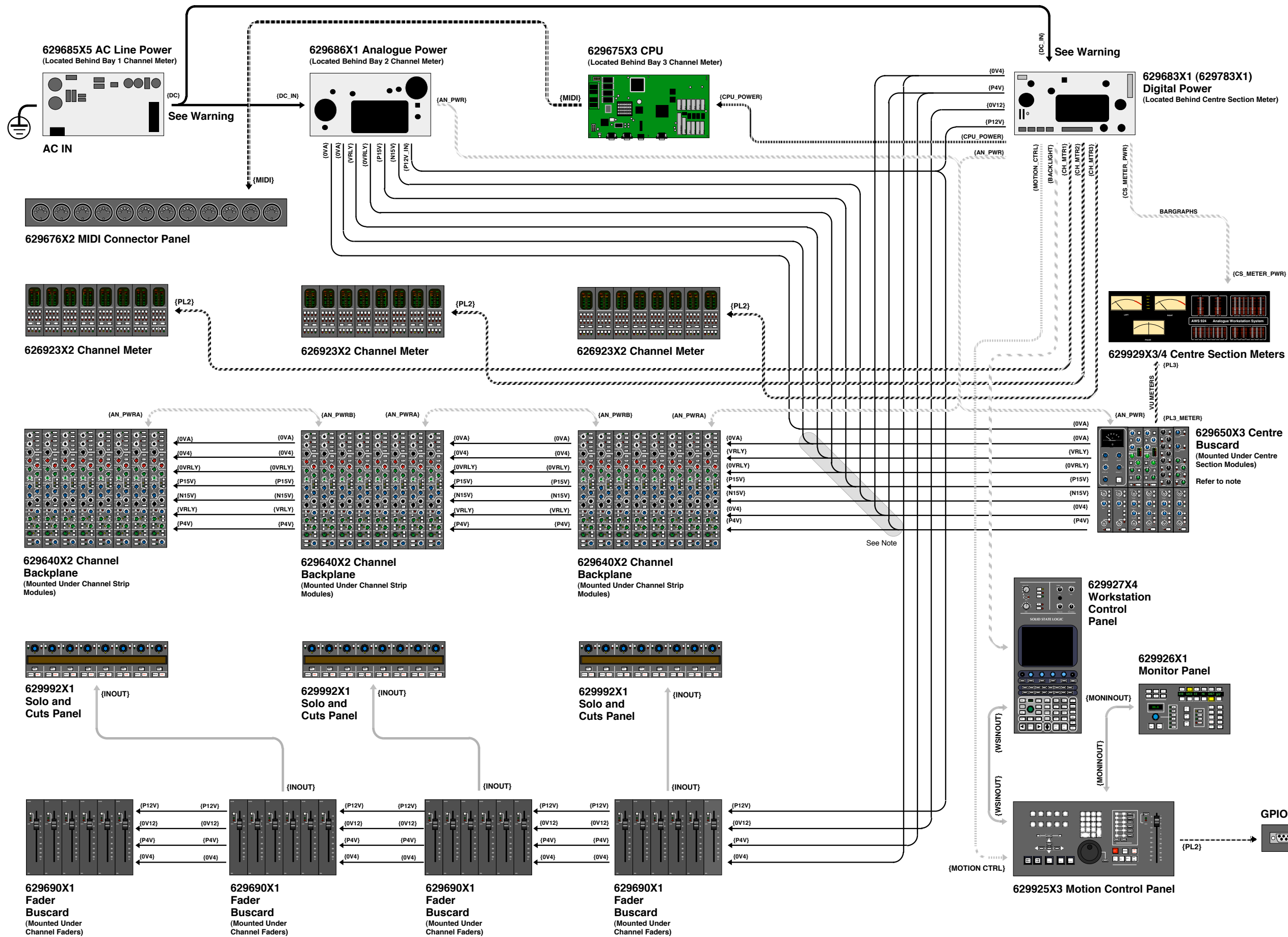


Note
26 way ribbon TR data & addresses Mix/Rec meters



AWS 924/948 DIGITAL CONTROL BLOCK SCHEMATIC	Drq. No T85.948DC
	Rev: 1.0
	Date: 10/11/10
	Design: AWS 924/948
	Drawn: C.J.R/Ma
	Ref: AWS DC MD

AWS 924/948 POWER WIRING OVERVIEW



Symbol Key	
Connector Label	{x}
PVC Wire 50/0.03mm	————
PVC Wire 50/0.25mm	————
4 Way Molex	-----
6 Way Molex
8 Way Molex
10 Way IDC	-----
10 Way PicoFlex	-----
18 Way PicoFlex	-----
26 Way IDC	-----

50/0.03mm Wiring Colour Key	
Yellow	+12V
White	+4V
Black	0V
Red	+15V
Blue	-15V

50/0.25mm Wiring Colour Key	
Yellow/Green	AC GND
Blue	DC Return
Black	Enable
Blue	360V DC

Note
Connections are made on top side of the 629650X1 Centre Bus Card.

Warning
The console's AC Line Power module is mains powered, and is not transformer isolated. This unit generates DC Voltages up to 350V.