

# Reaper and Nucleus<sup>2</sup>

## Setup and Quick Start Guide



## Introduction

This tutorial details how to setup Reaper with your SSL Nucleus<sup>2</sup>.

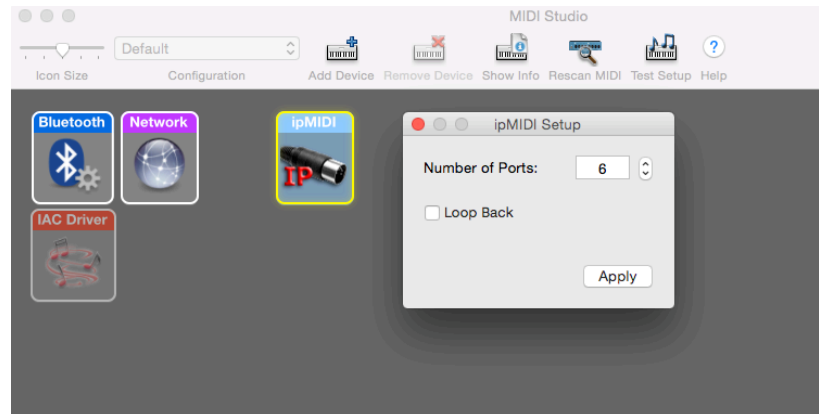
This tutorial assumes you have already installed all the necessary Nucleus<sup>2</sup> related software on your computer and that there is both a working network and USB connection from your DAW computer to the Nucleus. If you have yet to configure this part of your system, please refer to the Nucleus<sup>2</sup> Owner's Manual before continuing.

Go to the [SSL website](#) > [Nucleus<sup>2</sup> Product page](#) > [Downloads](#) to make sure your software is all up-to-date.

# ipMIDI Setup

## Apple MacOSX

- 1) Close all applications using MIDI
- 2) Open AudioMidi Setup (Applications > Utilities > Audio MIDI Setup)
- 3) Open the MIDI Window (Audio MIDI Setup > Window > Show MIDI Studio)
- 4) Double click the ipMIDI icon
- 5) Set number of ports to 6 and ensure that 'Loopback' is not ticked and then press 'Apply'



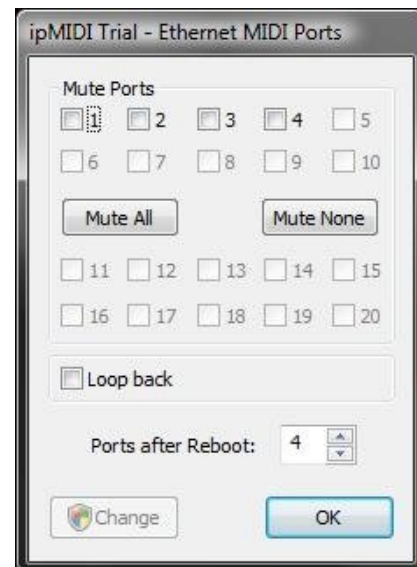
OR

## Microsoft Windows OS

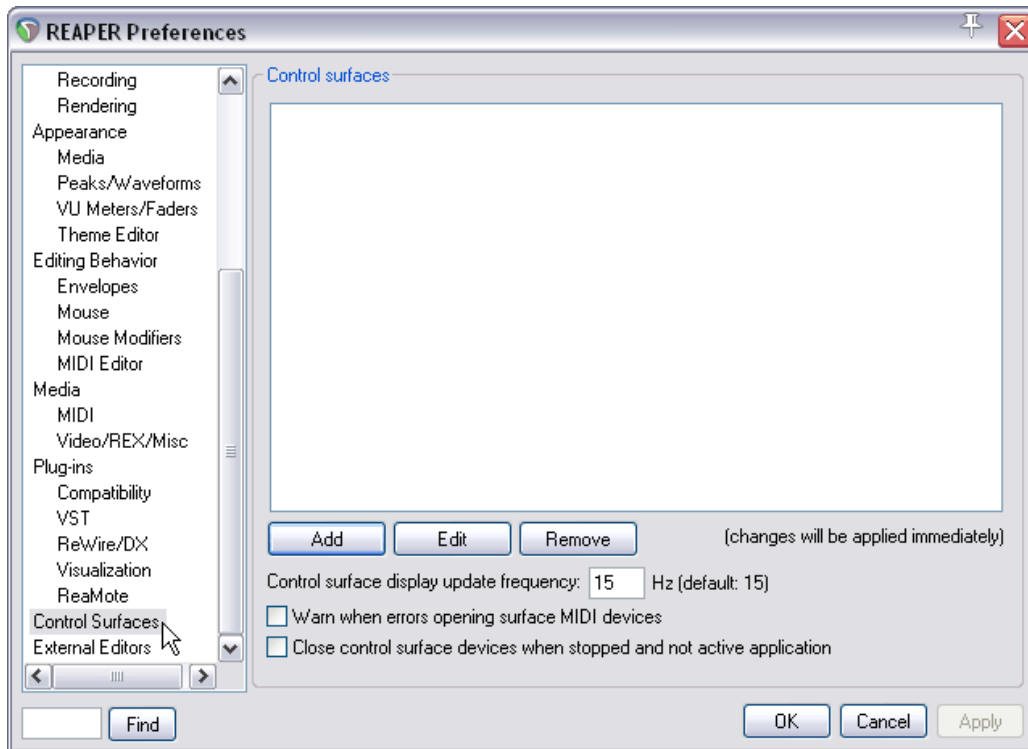
This setup information covers Windows 7, 8, and 10

- 1) Launch the ipMIDI Monitor application
- 2) Ensure Ports 1 to 6 are not muted
- 3) Un-tick 'Loop Back'
- 4) Set 'Ports after Reboot' to 6 and ensure that 'Loopback' is not ticked and then press 'OK'

**Note:** If you are opening up Ports for the first time, after Rebooting your computer, these will be 'muted'. Be sure to open ipMIDI back up and untick the muted Ports

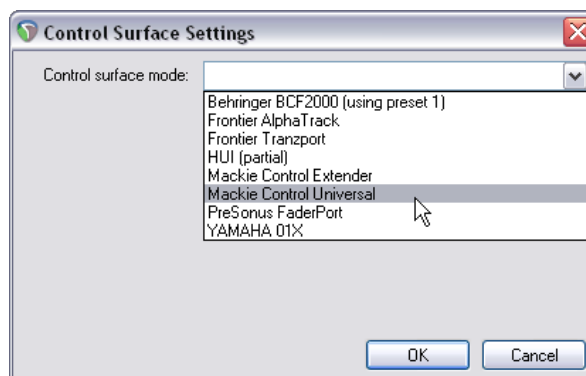


# Setting up Reaper

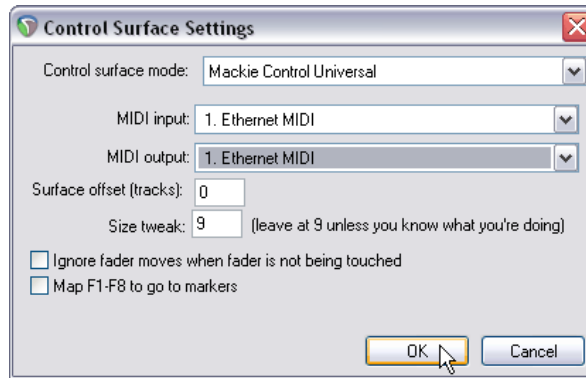


This setup guide assumes you are setting up control of Reaper on DAW layer 1.

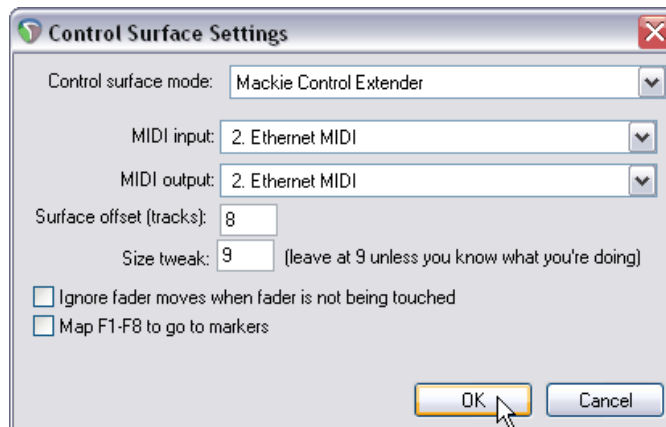
- 1) Launch Reaper and click Preferences under the Options menu.
- 2) In the Preferences window, scroll down the left hand pane and select 'Control Surfaces' (as shown above).
- 3) Click Add, and set the Control Surface mode to 'Mackie Control Universal'



- 4) Set MIDI input and MIDI output to ipMIDI Port 1 (as shown below)



- 5) Click OK
- 6) Repeat steps 3 and 4 for a 'Mackie Control Extender' and set the MIDI input/output to ipMIDI Port 2.



- 7) Set the surface offset to '8' (as shown above) for the Mackie Control Extender, and click ok.

### Nucleus<sup>2</sup> Setup

From the Remote application, set the Nucleus DAW layer 1 to 'Nuendo/Cubase Standard' for control of Reaper.